



## ATTENDEE INFO



### Attendee information for the Wonderful World of Weddings

Everything you need to plan the perfect wedding is here. Below we have listed the fine organizations that are associated with the Wonderful World of Weddings. The organizations that are participating in the show will have their booth number after their listing.



#### 2012 SHOW LOCATION:

Wisconsin Exposition Center  
at State Fair Park - Hall C

#### 2012 SHOW DATES & TIMES:

**Saturday, January 7**

10:00am - 4:30pm

**Sunday, January 8**

10:00am - 4:30pm

#### FASHION SHOW HOURS:

Saturday & Sunday

12:30pm & 3:00pm

(45 minute shows)

#### WELCOME:

**Welcome to the 44th annual Wonderful World of Weddings.**

Since our first show 44 years ago, the Wonderful World of Weddings has been the premier bridal show in the Milwaukee area. We have the best selection of bridal-related products and services along with experienced professionals who will be on hand to answer your questions and provide great ideas to make your dream wedding a reality. The Wonderful World of Weddings is truly "one-stop shopping."

Last year over 6,000 visitors attended the show, which included brides, grooms, bridal party members, friends, parents of the bride & groom, and interested parties planning special events such as anniversary parties, family gatherings, quinceaneras or corporate events.

#### PRIOR TO THE SHOW:

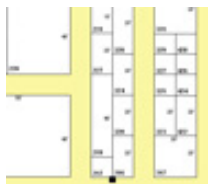
Get organized. List the items you are specifically looking for. Go online to the Exhibitor Listing and circle the vendors you want to visit; then note their booth location on the 2012 Expo Floor Plan.

**WEDDING SHOW SPONSORS**  
(CLICK HERE)

We are proud to be associated with many fine businesses and organizations. Here are the quality vendors that participated in the 2011 Show.

**EXHIBITOR LIST**

(CLICK HERE)



[View floor plan](#)

**ADVANCE TICKET FORM**

(CLICK HERE)



**TICKET LOCATIONS:**

**Amelishan Bridal**

1329 Hwy 175 (Richfield Plaza)

Hubertus

Tel: 262-628-1217

Hours:

Tues. & Wed.: 12:00pm – 7:00pm

Thurs.: 12:00pm – 8:00pm

Friday: 11:00am – 7:00pm

Saturday: 9:00am – 4:00pm

Sunday: 10:00am – 2:00pm

Closed Monday

**Broadway Paper**

191 N Broadway

Milwaukee

Tel: 414-277-7699

Hours:

Mon.-Fri.: 11:00am – 7:00pm

Saturday: 10:00am - 5:00pm

Sunday.: 12:00pm – 5:00pm

**Eva's Bridal Center**

100 E. Oak St

Oak Creek

Tel: 414-570-3800

Hours:

Mon. - Thurs.: 12:00pm – 8:00pm

Friday: 12:00pm – 5:00pm

**AT THE SHOW:**

Since there are about 175 exhibiting companies, make sure you wear comfortable shoes and attire.

Bring your date calendar, along with your checkbook/ credit card for those wedding show specials that are offered during the show.

Make sure you pick up a Bridal Bag as you enter the Expo and a Show Directory, which lists all exhibitors. As you go through the Expo, you can put all the important literature you pick up into this bag for your future reference.

**Free Wedding Guide from Premier Bride**

All Brides that attend the Show receive a complimentary copy of Premier Bride – the ultimate guide for planning a wedding.

There are two 45-minute fashion shows daily. Use the program to check off any items that you may be interested in; programs are available at the Fashion Show Stage. Our fashion shows get very crowded, so come early if you want a prime seat!

**COME TO THE 44<sup>th</sup> ANNUAL SHOW –  
THIS IS WISCONSIN'S LARGEST, OLDEST  
& MOST PRESTIGIOUS BRIDAL EXPO.**

Saturday: 10:00am – 5:00pm

**Expo Productions Inc**

510 Hartbrook Dr, Lower Level  
Hartland  
Tel: 262-367-5500  
Hours:  
Mon.-Fri.: 8:00am – 5:00pm  
Closed Saturday & Sunday

**First Choice Travel & Cruise**

2120 E Moreland Blvd, Ste K.  
(Westbrook Shopping Center)  
Waukesha  
Tel: 262-542-5955  
Hours:  
Mon.-Fri.: 8:00am – 5:00pm  
Saturday: 9:00am – 1:00pm

**Heim's Bridal Shop**

4805 S 74th St, Ste C.  
Greenfield  
Tel: 262-672-4814  
Hours:  
Mon.-Fri.: 12:00pm – 7:00pm  
Saturday: 10:00pm - 5:00pm

**Images of Racine Bridal**

6222 Washington, Hwy. 20  
Racine  
Tel: 262-886-3400  
Hours:  
Mon., Wed. & Fri.: 12:00pm – 7:00pm  
Tues.-Thurs.: 12:00pm – 6:00pm  
Saturday: 10:00am – 5:00pm

**Stone Manor Bridal**

W61N311 Washington Ave  
Cedarburg  
Tel: 262-377-5334  
Hours:  
Mon.-Tues.: 11:00am – 7:00pm  
Wed.-Thurs.: 1:00pm – 9:00pm  
Friday: 10:00am – 5:00pm  
Saturday: 9:00am – 5:00pm



510 HARTBROOK DRIVE • HARTLAND, WI 53029 • 800-367-5520 • FAX: 262-367-9956

